

February 2024



Upcoming Events

- 1st Monday of Month — Plan Commission 6:30 p.m.
- 2nd & 4th Tuesday of Month — Village Board 7:00 p.m.

Please visit the Village Meetings Calendar located under the Government tab at prairiedusac.net for Village meetings and agendas.



2024 KEY ELECTION INFORMATION

Spring Election & Presidential Preference Primary
Tuesday, April 2

Partisan Primary
Tuesday, August 13

General Election
Tuesday, November 5

Please remember to register at <https://myvote.wi.gov> if there is a change of name or address.

At all elections now in Wisconsin, voters must show an acceptable photo ID before a ballot will be provided. Please see prairiedusac.net for additional information.



The Power Cost Adjustment Clause

What This Fuel Charge Adjustment Means to You and Your Bill

You may wonder what the Power Cost Adjustment Clause (PCAC) on your electric bill is. The PCAC has been authorized by the Public Service Commission of Wisconsin for the municipal utilities and small investor-owned utilities. The PCAC is an automatic adjustment clause that allows a utility to adjust customer's monthly bills either upward or downward to reflect the utilities average cost of purchasing power that is either above or below the average cost that is authorized by the Public Service Commission of Wisconsin and reflected in the utility's base rates.

The PCAC varies monthly depending on the wholesale cost Prairie du Sac Municipal Utilities pays to purchase electricity to meet all of our customers' needs.

Since we do not own our own electric generating resources, our nonprofit utility depends on contracts with others to deliver the electricity that lights our homes and powers our businesses.

Some months the PCAC is a positive amount and appears as a charge. Other months it is a negative amount and appears as a credit. During times of peak demand for electricity - such as the summer and winter months - the cost to purchase power is typically higher. In general, the cost to generate power is rising throughout the utility industry. That's largely a result of needed improvements that are being made to the transmission system and the construction of new generating facilities to keep up with a growing demand for power.

Village Parks

- Blanchard Park – 790 Woodland Trail
- Culver Community Park— 340 21st Street
- Doll Park – 1300 Grand Avenue
- Elsing Park – 908 21st Street
- Fieldstone Park – 2020 Fieldstone Blvd
- Fireman's Park – 700 Water Street
- Florence Park – 1400 Lincoln Avenue
- Graff Park – 350 Water Street
- Marion Park – 145 First Street
- Riverwalk Park/Overlook – 490 Water Street
- Veterans Memorial Park – 700 VFW Drive
- Washington Park – 435 Galena Street
- Westwynde Park – 2011 Prairie Street
- Veterans Memorial Park – 700 VFW Drive



Marion Park

You can submit a request to reserve the East & West Shelters at Marion Park, Florence Park Shelter, and Westwynde Park/Concession Shelter by visiting Village's website, www.prairiedusac.net or by calling 608-643-2421.



335 Galena Street
 Prairie du Sac, WI 53578
 (608) 643-2421
 pdsutilities@prairiedusac.net
 www.prairiedusac.net

**After Hours Emergency Street
 or Utility Condition**

Call (608) 643-3133

Police, Ambulance or Fire

Emergencies

Call 911

Police Non-Emergency

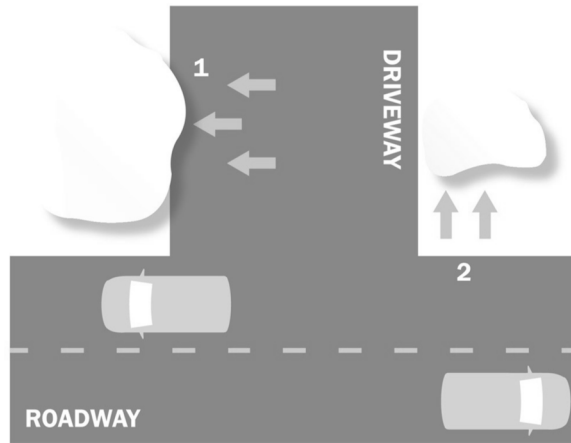
Call 1-800-377-1195

**Village Hall
 Construction**

As construction at Village Hall continues, **the Village Hall lobby remains closed.** Village Hall transactions are encouraged to be conducted online (www.prairiedusac.net), by e-mail (pdsutilities@prairiedusac.net), by telephone (608-643-2421), by mail (335 Galena Street, Prairie du Sac, WI 53578), by use of the drop box (located near the main entrance), or by using the walk-up window located just above the drop box. The window is available during normal hours 9 AM to 5 PM, Monday—Friday. To use the window, please ring the door bell located at the window. We apologize for the inconvenience.



DRIVEWAY SNOW REMOVAL



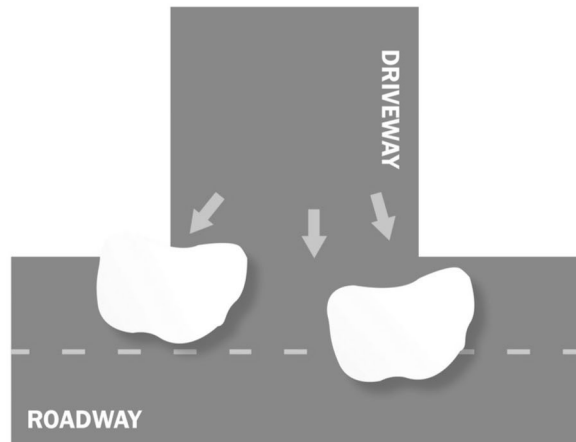
DO this



- 1 Move snow from your driveway onto your property:** Standing, facing the road, move snow over to the right side of your driveway.
- 2 And clear the area by the road on the left side of your driveway.** This gives plows a place to unload snow and helps reduce the chance of a snow berm being created across your driveway.

NOT this

Move snow from driveways into the road or right-of-way:
 It's illegal to push snow into or across roadways and rights-of-way. This can create a hazard for people traveling the road, such as drivers, bikers and snow removal equipment operators, and can create liability issues for the property owner.



The Village of Prairie du Sac Code prohibits the blowing, pushing or otherwise depositing of snow or ice upon any streets or alleyways. This includes pushing and/or piling snow across the street from your property. Violators are subject to a \$100 fine plus court costs.



Bar Buddies Program—The Sauk Prairie Safe Ride

608-370-4300

Friday & Saturday Nights from 7:00 p.m.—3:00 a.m.

We operate like a cab service for rides from your home or hotel for a nominal fee, but rides home are FREE. Additional information and seasonal holiday hours can be found on our Facebook page at facebook.com/BarBuddiesSaukPrairie.

*****Please note, you DO NOT need to be in a tavern to get a safe ride home*****

Keep us in mind for your weddings, graduations, and other home celebrations. Bar Buddies is a 501(c)(3) non-profit program run in conjunction with the Sauk Prairie Police Department and Wisconsin DOT to provide FREE safe rides home. The program runs through donations and grant funding.